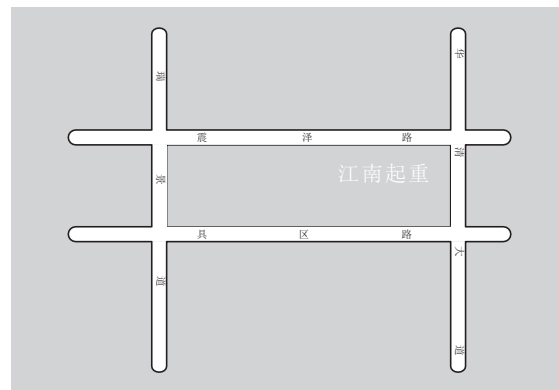




江南重工
J J H I G



江苏江南起重机械有限公司

地址：江苏省无锡市滨湖区苏锡西路1号 邮编：214131
电话：0510-82269387；0510-82269373 传真：0510-85600677
E-mail: gujian@jjhig.com; admin@jjhig.com
网址：<http://www.jjhig.com/>

Jiangsu Jiangnan Crane Machinery Co., Ltd

Address: No.1, Suxi West Road, Binhu District, Wuxi City, Jiangsu Province, China
Postcode: 214131
Tel No.: 0086 510 82269387; 0086 510 82269373
Fax No.: 0086 510 85600677
E-mail: gujian@jjhig.com; admin@jjhig.com Web Site: <http://www.jjhig.com/>

联系代理



专业，认真，诚信
Professional, Earnest, Integrity



江苏江南起重机械有限公司
Jiangsu Jiangnan Crane Machinery CO., LTD

企业文化

Corporation
culture

精益求精的品质要求， 为您制造精品设备。 **Excelsior quality request, To built excellent equipment for you.**
诚信务实的企业精神， 为您打造放心工程。
Honesty and Pragmatic enterprise sprity, To built safety project for you.
全心全意的服务理念 为您创造更多价值。
Wholehearted service idea, To creat more value for you.

03	公司简介 Company Introduction
05	企业荣誉和资质 Company Certificates And Honors
07	造船门式起重机 Shipyard Goliath Gantry Crane
09	船厂门座机 Shipyard Level Luffing Crane/Jib Crane
11	港口门座机 Port Level Luffing Crane/Jib Crane
13	轨道式集装箱门式起重机 Rail Mounted Container Gantry Crane
14	轮胎式集装箱门式起重机 Rubber Tyred Container Gantry Crane
15	岸边集装箱起重机 Ship To Shore Gantry Crane/Quayside Container Crane
17	通用桥、门式起重机 Gantry Crane & Overhead Crane
19	卸船机 Ship Unloader
21	装船机 Ship Loader
23	堆取料机 Stacker;Reclaimer;Stacker And Reclaimer
25	其它起重设备 Other Products
26	主要厂房和设备 Main Work Shop And Equipments
27	生产车间 Work-Shop
29	主要业绩表 Major Sales Performance



公司简介

COMPANY INTRODUCTION

江苏江南起重机械有限公司始建于1973年2月，位于太湖之滨-无锡，系江苏江南重工集团有限公司的核心企业，为中国大型起重设备的主要制造厂家之一。

经过40多年的发展，我司现有资产总额2.5亿元，华庄镇厂部占地8.8万平方米，安镇厂部占地6万平方米其中建筑面积5万多平方米。现有员工近500名，其中高级工程师6名，中、初级技术人员36名。我司拥有生产金属结构的大型车间，数控切割机，钢板除锈预处理机，理化性能检测，力学实验以及焊接探伤仪器等各类设备200余台，有着完整的生产加工和检测能力。我司年销售额5亿元，拥有自营进出口权，其中年出口额4000万美元左右。

公司拥有机械设计研究部门，聘用了上海交通大学，中船公司第九设计院，北京起重运输机械研究所等机构的一流专家，并可联合上述设计单位，根据客户所要求设计制造各类产品。

公司主要产品有：各类单梁起重机，5-300吨各类电动桥式吊钩、抓斗、电磁起重机；300吨以下的双小车桥式起重机；10-900吨的单、双梁大型造船以及普通龙门起重机；门座式起重机；10-60吨集装箱龙门起重机和集装箱岸桥；各类型的装船、卸船机以及其他港口起重机。

公司一直致力于通过提高自身素质和专业知识，来完善和发展起重机械产品，我司通过ISO9001：2008质量管理体系等认证，是江苏省高新技术企业，拥有多项专利技术，持有国家质量监督检验检疫总局颁发的A级《特种设备制造许可证》、《特种设备安装改造维修许可证》。拥有大批优秀的研发设计、专业制造，项目管理和售后服务人员，有着完善、严格的生产制作工艺和管理制度。

我们本着“精益求精的品质要求，诚信务实的企业精神，全心全意的服务理念”为您打造精品工程设备。江苏江南起重机械有限公司期待与您合作。

Welcome to Jiangsu jiangnan crane machinery co., ltd. Jiangsu jiangnan crane machinery co., ltd. was founded at Feb, 1973, located in Wuxi city besides Taihu Lake, and it is the core company of Jiangsu Jiangnan heavy industry group ltd. Our company is also the one of the largest crane manufacture in China.

With more than 40 years development, our company now holding assets totally is around 42 million US dollars. Huazhuang town plant is occupied 88 thousand square meters; Anzheng town plant is occupied 60 thousand square meters, the building area is 50 thousand square meters. We now have 500 working staff, including 6 senior engineers, 36 middle-level technicians. Our company owns large metal structure working shop, NC cutting machine, and steel plate rust cleaning pre-treatment machine, physical and chemical performance test instrument, Mechanics Experiment and weld flaw detection instrument etc, and all kinds of equipment is over 200 sets, what are making us have complete production and testing ability. Our product sales all over the world, the annual turnover is around 84 million us dollars; we have self import and export licence, our annual exporting turnover is around 40 million us dollars.

Our company has machine research and design institute, and employ leading expert from Shanghai Jiaotong University, The ninth design Institute of China Shipbuilding Corporation and Beijing Hoisting and conveying Machinery reasearch institute, we can also joint-design with above institute then manufacture crane as per customer's requirement.

Our company main products including: All kinds of single girder crane; all kinds of 5- 300T electric overhead crane; bucket; electromagnetic crane; double-trolley overhead crane under 300T; single/ double girder gantry crane under 900T; portal/ jib crane; 10-60T container gantry crane; truss/box type loading/unloading bridge; all kinds of ship unloader and other port crane.

Our company always keeps on improving and developing crane machinery product by improving self-quality and professional knowledge. We have passed ISO9001: 2008 quality management system certificate, our company is High-tech enterprise of Jiangsu province, owning a lot of invention patent, holding the A class "Manufacture license of special equipment" and "installation, modification and maintenance license of special equipment". We have a lot of outstanding staff in research, design, professional manufacture, project management and after sales sevice. We have complete& strict production process and management system.

Our company culture is "Pursuit of excellent quality, Honesty and Pragmatic enterprise sprity, Whole hearted severice idea" based on these we built excellent equipment for you.

Jiangsu jiangnan crane machinery co., ltd is looking forward to cooperate with you.

公司资质 和荣誉

Company Certificates and Honors



技术源于历史和专业...

Technology is from history and professional...

我司拥有40多年起重机械的制造历史，机械设计研究部门聘用上海交通大学，中船公司第九设计院，北京起重运输机械研究所等机构的一流专家。是江苏省高新技术企业，拥有多项专利。

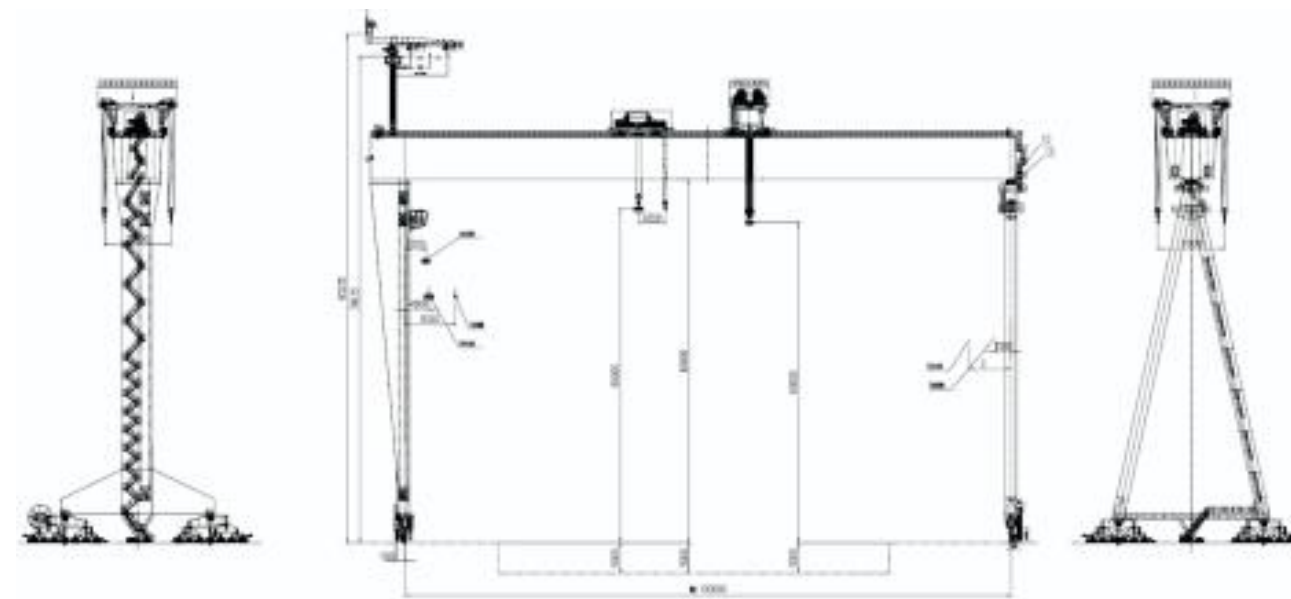
Our company has more than 40 year's history of manufacturing cranes, technical department employ leading expert from Shanghai Jiaotong University, The ninth design Institute of China Shipbuilding Corporation and Beijing Hoisting and conveying Machinery reasearch institute. we are High-tech enterprise of Jiangsu province and owning a lot of invention patent.

造船门式起重机 Shipyard Goliath Gantry Crane

- 大吨位、大跨度、大起升高度。
- 产品设计先进、运行安全、结构合理。
- 操作舒适简单、分段合拢作业时定位准确，维修方便。 PLC控制，实时数据显示。
- 柔性铰装置，防啃轨技术。
- 上纠偏，下纠偏装置，同步技术，安全性能好。
- 新型运行机构专利技术，大跨度智能纠偏专利技术，能量回馈系统节能专利技术。
- 实时监控系統，超载显示，报警，保护技术。
- 司机室人机工程设计，舒适豪华。产品配置合理，服务专业。
-
-



- Heavy lifting, long span, high lift
- Advanced design, operation security, rational construction
- Operation is easy and comfortable, joint work location is accuracy and easy for maintenance. PLC control system, real-time data display.
- Flexure hinge device, anti-rail gnawing technique.
- Up/down deviation rectification device, synchronization technique, safety performance is excellent
- New travel mechanism patent technique, longspan intelligent correction patent technique, energy feedback system, energy saving patent technique.
- Real-time monitoring system, over load warning & protect system
- Cabin ergonomic design, comfortable and luxury High level configuration, Professional service
-
-



技术规格 Technical specification

项 目	类型 Type	单梁, 双梁 Double/Single Girder
	联合抬吊 Total lifting Cap.	100t~2000t
空中翻身 Turnover Cap.	70t~1500t	
跨度 Span	40m~260m	
起升高度 Lifting height	20m~100m	
起升速度 Lifting speed	上小车 Upper trolley	0~3m/min, 0~5m/min, 0~6m/min
	下小车主钩 Lower trolley main hook	0~3m/min, 0~5m/min, 0~6m/min
	下小车副钩 Lower trolley Aux. hook	0~10m/min, 0~15m/min, 0~20m/min
运行速度 Travelling speed	大车 Gantry	0~20m/min, 0~30m/min, 0~40m/min
	上小车 Upper trolley	0~20m/min, 0~30m/min, 0~40m/min
	下小车 Lower trolley	0~20m/min, 0~30m/min, 0~40m/min
	电源 Power supply	380V, 10KV

船厂门座机

Shipyard Level Luffing Crane/Jib Crane

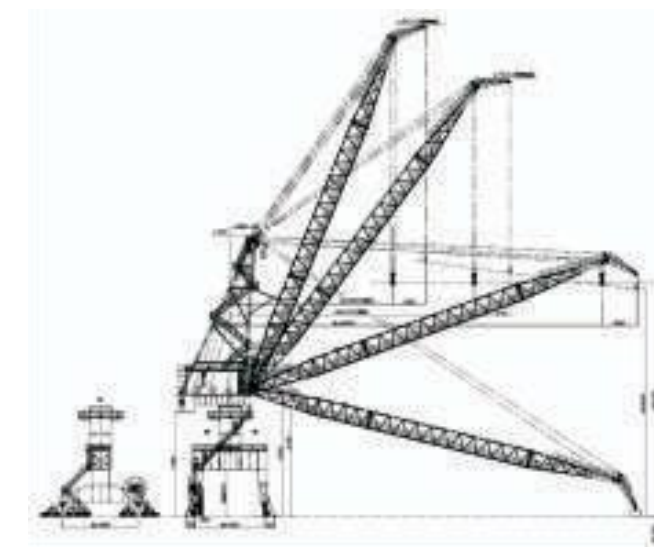
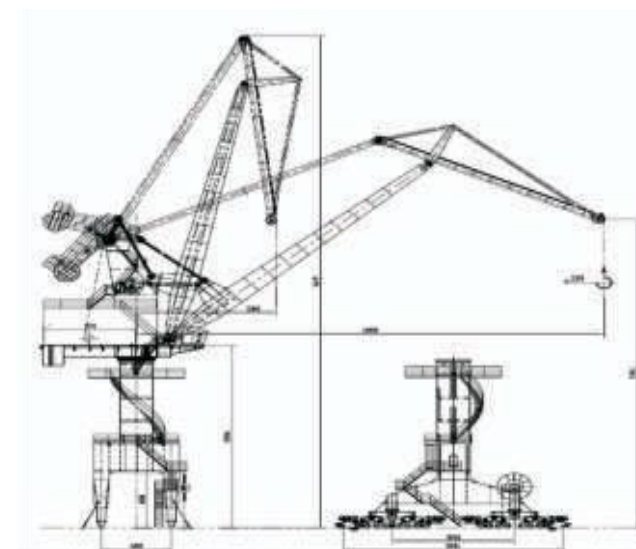


江苏江南起重机械有限公司为中基船业设计制造的45t*70m 门座机 45t*70m level luffing crane Customer: ZHONGJI Shipyard



江苏江南起重机械有限公司为新加坡吉宝船厂设计制造的30t*105m门座机 30t*105m level luffing crane Customer: Keppel shipyard(Singapore)

- 高端配置 High-level configuration
- 组合臂架系统 Combined jib system
- 起升机构防过卷扬和失速保护技术 Hoisting mechanism over lift and stall protect technology.
- 一流的设计团队，科学的制造工艺，先进的检测体系 First class design team, scientific manufacturing technique.
- 全方位视野司机室，集中式操作台，操作舒适简单。
360-degree vision cabin, Centralized work station, easy and comfortable operation.
- 带载变幅，载重水平移动 Loading luffing, horizontal moving with load.
- 回转大支承，360°全回转，脚踏液压式刹车系统，极限力矩联轴器保护
Large rotary bearings, 360°all side slewing, pedal and hydraulic type brake system, stall torque coupling protect device.
- 先进机上通信系统 Advanced communication system. 航空障碍信号灯，避雷针 Aviation light and lightning rod 根据
- 客户需要可以整机发运，节省现场安装时间
- Can transport the complete machine to customer's site, save erection time at site



技术规格 Technical specification

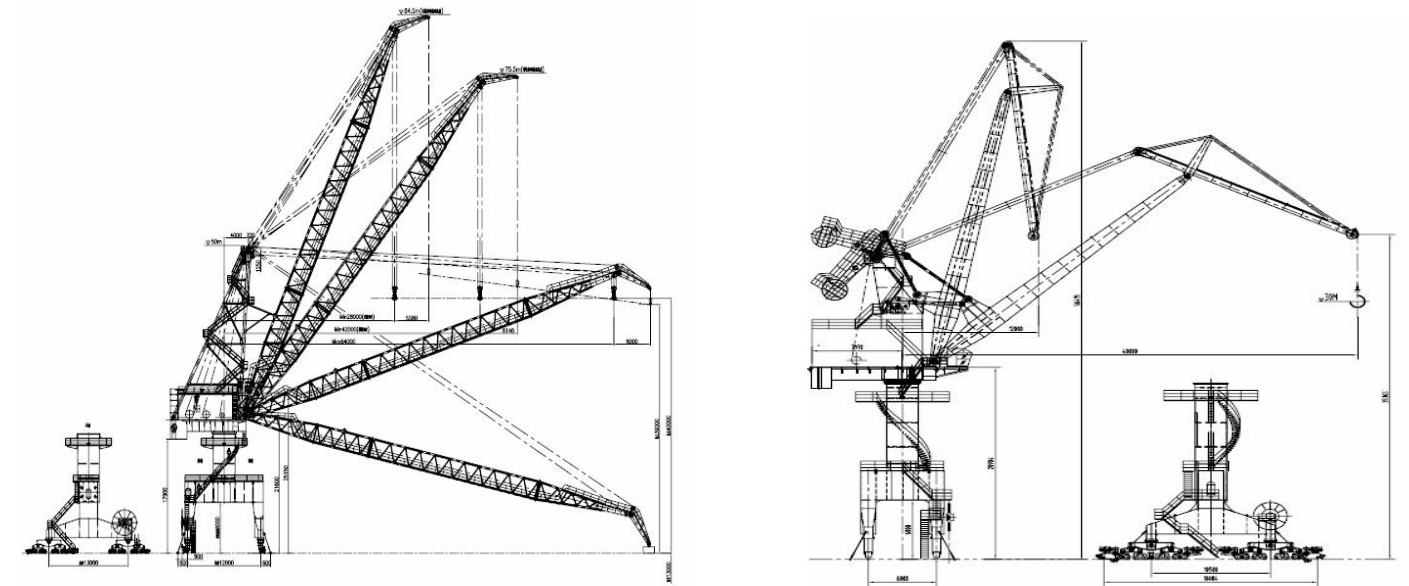
类型 Type	额定载重量 Rated capacity	工作幅度 Working range (m)	起升速度 Lift speed (m/min)	变幅速度 Luffing speed (m/min)	旋转速度 Rotation speed (r/min)	行走速度 Travel speed (m/min)
船厂门座机 Shipyard LLC	10t-70t	20m-70m	≤30	≤30	0.5-0.8	≤30
	80t	20m-70m	≤30	≤30	0.5-0.8	
	100t	25m-70m	≤20	≤20	0.3-0.5	
	160t	30m-70m	≤10	≤20	0.2	≤20
	200t	30m-70m	≤10	≤15	0.2	

港口门座机

Port Level Luffing Crane/Jib Crane



- 高端配置 High-level configuration
- 组合臂架系统 Combined jib system
- 起升机构防过卷扬和失速保护技术 Hoisting mechanism over lift and stall protect technology.
- 一流的设计团队，科学的制造工艺，先进的检测体系 First class design team, scientific manufacturing technique.
- 全方位视野司机室，集中式操作台，操作舒适简单。
360-degree vision cabin, Centralized work station, easy and comfortable operation.
- 带载变幅，载重水平移动 Loading luffing, horizontal moving with load.
- 回转大支承，360°全回转，脚踏液压式刹车系统，极限力矩联轴器保护
Large rotary bearings, 360° all side slewing, pedal and hydraulic type brake system, stall torque coupling protect device.
- 先进机上通信系统 Advanced communication system.
- 航空障碍信号灯，避雷针 Aviation light and lightning rod
- 根据客户需要可以整机发运，节省现场安装时间 Can transport the complete machine to customer's site, save erection time

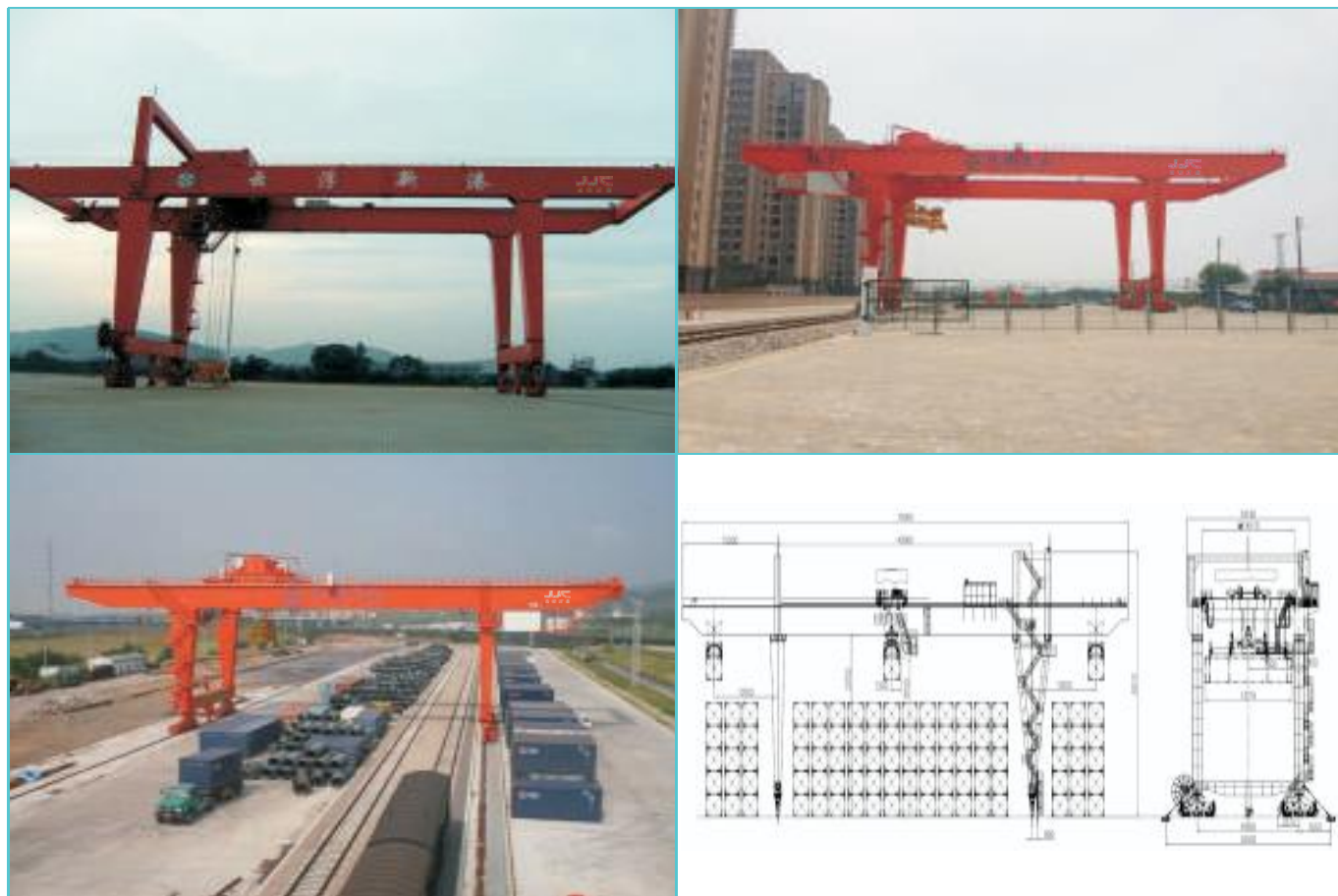


技术规格 Technical specification

类型 Type	额定载重量 Rated capacity	工作幅度 Working range (m)	起升速度 Lift Speed (m/min)	变幅速度 Luffing Speed (m/min)	旋转速度 Rotation speed (r/min)	行走速度 Travel Speed (m/min)
四连杆门座机 Doudle Jib LLC	5t~50t	9m~40m	≤60	≤60	1.0-1.5	≤26
			≤55	≤50	1.0-1.4	
			≤50	≤45	1.0-1.3	
单臂架门座机 Single Boom LLC	5t~50t	8.5m-22m 11m-30m 12m-35m 11m-30m 12m-35m	≤25	≤25	1.0-1.3	
			≤25	≤25	1.0-1.3	
			≤25	≤25	1.0-1.3	
			≤25	≤25	1.0-1.3	
			≤25	≤25	1.0-1.3	

轨道式集装箱门式起重机 Rail Mounted Container Gantry Crane

- 高性能变频驱动系统 High performance variable frequency driving system
- 独立变频防摇系统 Independent variable frequency anti-sway system
- 实时监控系統, 超载显示, 报警, 保护技术。 Real-time monitoring system, over load warning & protect system
- 司机室人机工程设计, 舒适豪华。 Cabin ergonomic design, comfortable and luxury.
- 产品配置合理, 服务专业。 High level configuration, Professional service
- 防风锚定, 节能环保 Weather anchor, saving energy and protecting environment
- 旋转吊具, 柔性着箱 Rotate spreader, flexibility landing



技术规格 Technical specification

吊具下额定起重量 Rated load lifting capacity		35t,40t,40.5t,41t
跨距 Span		30m, 40m,43m, 45m
起升高度 Lifting height		12.5m, 15.3m, 18.2m, 21.1m
起升速度 Lifting speed	满载 Full load	15-36m/min
	空载 Empty load	20-65m/min
大车运行速度 Gantry travelling speed	满载 Full load	30-60m/min
	空载 Empty load	30-80m/min
小车运行速度 Trolley travelling speed		50-100m/min
吊具旋转角度 Spreader Slewing Angle		(-5°~+5°)
供电方式 Power supply		电缆卷筒 Cable reel

轮胎式集装箱门式起重机 Rubber Tyre Container Gantry Crane

- 高性能变频驱动系统 High performance variable frequency driving system
- 独立变频防摇系统 Independent variable frequency anti-sway system
- 实时监控系統, 超载显示, 报警, 保护技术。 Real-time monitoring system, over load warning & protect system
- 司机室人机工程设计, 舒适豪华。 Cabin ergonomic design, comfortable and luxury.
- 产品配置合理, 服务专业。 High level configuration, Professional service
- 防风锚定, 节能环保 Weather anchor, saving energy and protecting environment
- 旋转吊具, 柔性着箱 Rotate spreader, flexibility landing
- 混合动力驱动技术 Hybrid drive technique



技术规格 Technical specification

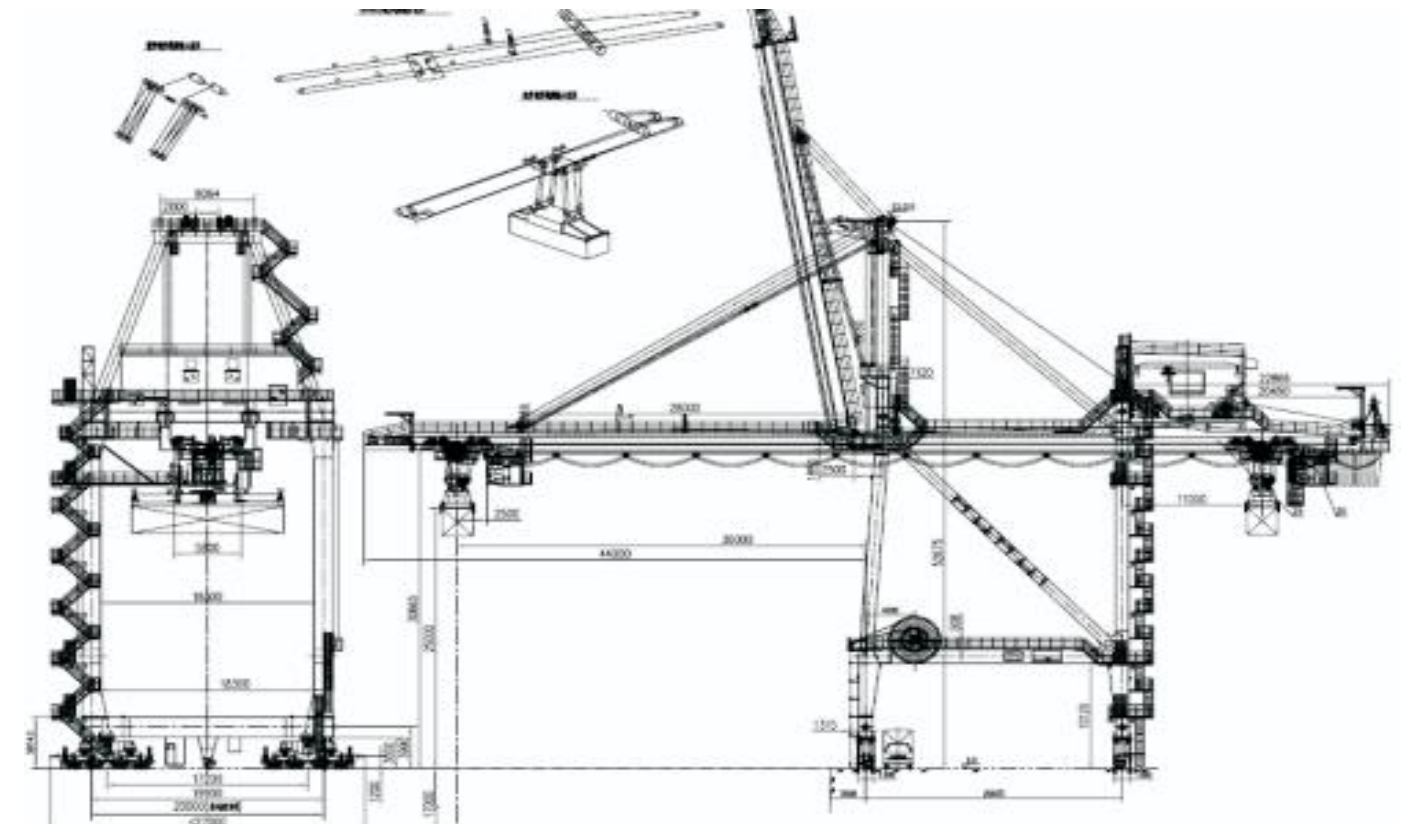
吊具下额定起重量 Rated load lifting capacity		41t,50t,61t,65t
跨距 Span		23.47m, 26.4m
起升高度 Lifting height		15.5m, 18.5m, 21.5m, 24.5m
起升速度 Lifting speed	满载 Full load	20-30m/min
	空载 Empty load	46-52m/min
大车运行速度 Gantry travelling speed	满载 Full load	30m/min
	空载 Empty load	130m/min
小车运行速度 Trolley travelling speed		70m/min
吊具旋转 Spreader Slewing Angle		±250mm
供电方式 Power supply		柴油发电或电缆卷筒 Diesel/Cable reel

岸边集装箱起重机

Ship To Shore Gantry Crane/Quayside Container crane



- 实时监控系統，超載顯示，報警，保護技術。 Real-time monitoring system, over load warning & protecting system
- 司機室人機工程設計，舒適豪華。 Cabin ergonomic design, comfortable and luxury.
- 產品配置合理，服務專業。 High level configuration, Professional service
- 能量反饋技術 Energy feedback technology
- 吊具自動歸位和鎖定技術 Spreader automatic positioning and locking technology 防風錨定，节能环保 Weather anchor, saving energy and protecting environment 掛艙保護裝置 Cabin protect device



技术规格 Technical specification

吊具下額定起重量 Rated load lifting capacity		30-80t
前伸臂 Front reach		25-70m
后伸臂 Back reach		10-12m
基距 Rail base		8-28m
起升高度 Lifting height	軌上 Above the track	10-45m
	軌下 Under the track	12-18m
起升速度 Lifting speed	滿載 Full-load	40-90m/min
	空載 Non-load	70-180m/min
小車運行速度 Trolley traveling speed		120-300m/min
大車運行速度 Gantry traveling speed		25-60m/min
最大傾角 Max.pitching angle		80°

通用门式起重机和通用桥式起重机

我司可根据各类工厂、码头、铁路等工矿企业，定制多规格、类别的通用门式和桥式起重机其取物装置为吊钩、抓斗或电磁吸盘（起重电磁铁），可同时使用其中二种或三种。

我司有着丰富的该型起重机设计制造和安装经验，产品规格多样，设计先进、配置合理、服务专业、运行安全、结构可靠。



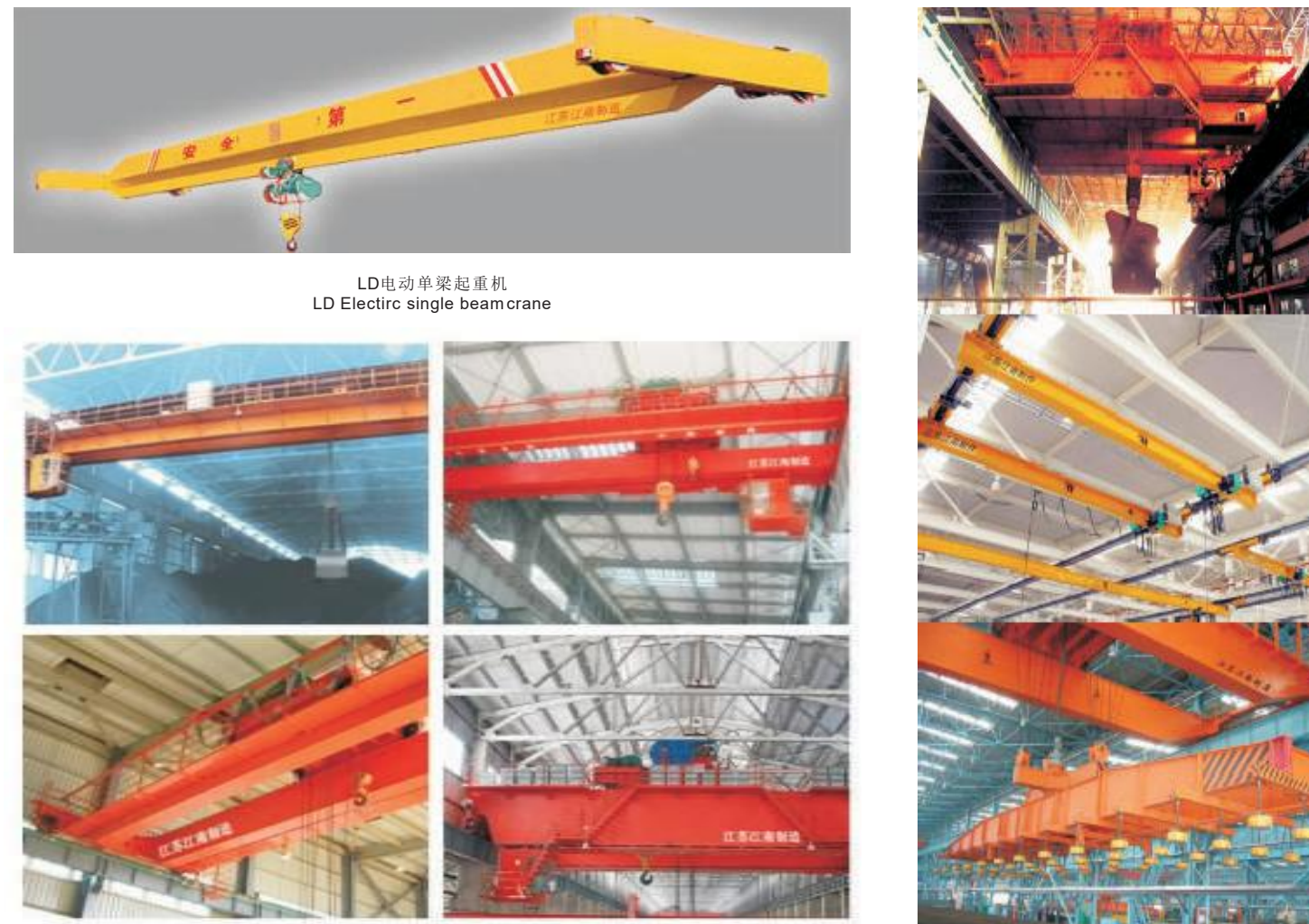
技术规格 Technical specification

类别 Type		单梁，双梁 single girder,double girder
起重量 Lifting capacity		5t,10t,15t,20t,32t,50t,75t,100t,160t,200t,320t
跨度 Span		18m,22m,26m,30m,35m,40m,
最大起升高度 Max. lifting height		9m,12m,16m,18m,20m
速度起升 Lifting speed	主起升 Main hoist	5m/min,6m/min,8m/min,10m/min,15m/min,
	副起升 Aux hoist	10m/min,12m/min,16m/min,20m/min,30m/min,
	小车行走 Trolley travelling	20m/min,30m/min,40m/min,50m/min,60m/min
	大车行走 Gantry travelling	30m/min,40m/min,50m/min,60m/min
电源 Power supply		380V

Gantry Crane & Overhead Crane

Our company can design and fabricate all kinds of Gantry Crane and Overhead Crane for all kinds of plant jetty and railway station for handling ,loading and unloading materials. The load handling device is including hook,grab,electromagnetic chuck etc.

Our company has rich experience in design,manufacturing and installation of this crane, our product's design is advance,configuration level is high,service is professional,structure is rational,operation is securit,easy and comfortable.



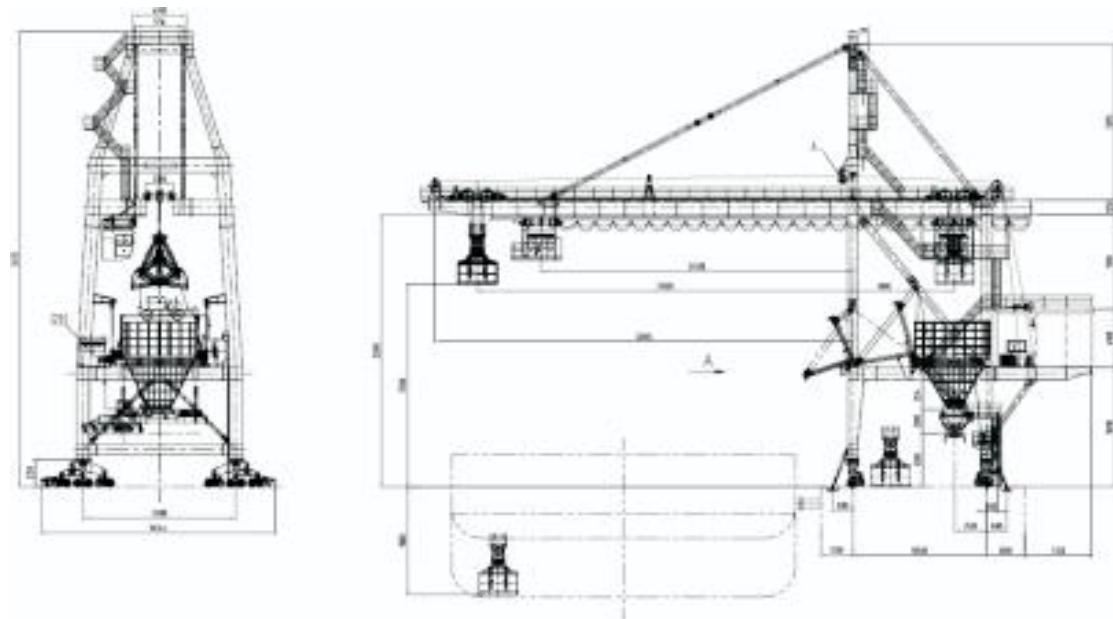
LD电动单梁起重机
LD Electric single beam crane

LH电动双梁起重机 LH Electric double beam crane

技术规格 Technical specification

类别 Type		单梁，双梁 single girder,double girder
起重量 Lifting capacity		5t,10t,15t,20t,32t,50t,75t,100t,160t,200t,320t
跨度 Span		10.5m,13.5m,16.5m,19.5m,22.5m,25.5m,28.5m,31.5m,
最大起升高度 Max. lifting height		9m,12m,16m,18m,20m, 22m
速度起升 Lifting speed	主起升 Main hoist	5m/min,6m/min,8m/min,10m/min,15m/min,
	副起升 Aux hoist	10m/min,12m/min,16m/min,20m/min,30m/min,
	小车行走 Trolley travelling	40m/min,50m/min,60m/min,70m/min,80m/min,
	大车行走 Gantry travelling	30m/min,40m/min,50m/min,60m/min
电源 Power supply		380V

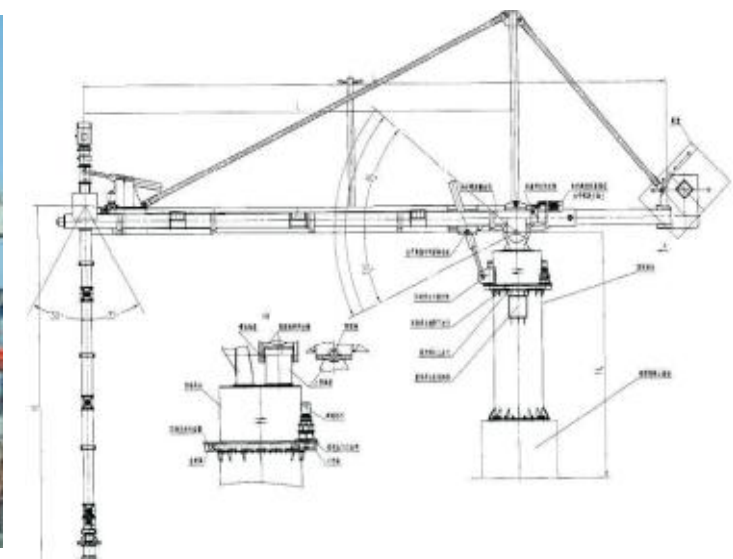
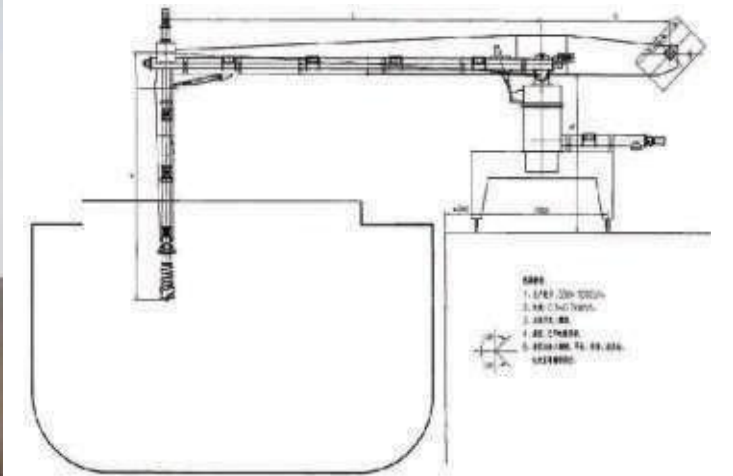
桥式抓斗卸船机 Grab Type Ship Unloader



技术规格 Technical specification

类别 Type		
额定生产率 Rated capacity		300t/h ~ 4000t/h
额定起重量 Rated lifting capacity		8t ~ 85t
工作速度 Operating speed	起升/开闭 Open/close	60m/min ~ 160m/min
	满载/空载 Full load/no load	80m/min ~ 200m/min
	小车运行 Trolley travelling	20m/min ~ 30m/min
	大车运行 Gantry travelling	6min ~ 10min
	前大梁俯仰 Front beam luffing	20min ~ 40min
外伸距 Outreach	司机室运行 Cabin travelling	18m ~ 50m
内伸距 Backreach		
轨距 Span		10.5m ~ 30m
起升高度 Lift height	轨上 Above rail	根据船型及码头条件确定
	轨下 Below rail	Design base on the dockside condition
电流 Power supply		
抓斗 Grab bucket		

螺旋连续卸船机 Screw Continuous Ship Unloader



技术规格 Technical specification

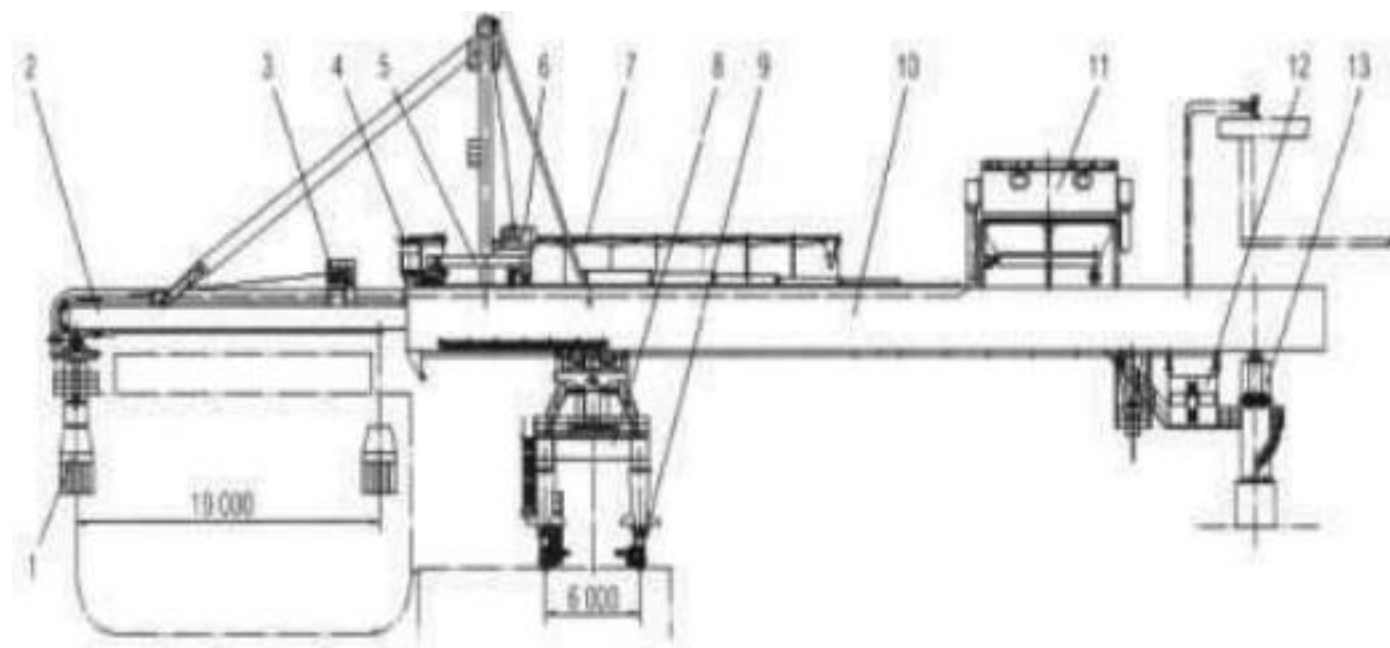
- 高效
High efficient
- 节能
Energy conservation
- 环保
Environmental protection
- 降低成本
Cost reduction
- 功能齐全 Complete function 运转可靠
- Safe & reliable operation

类别 Type			
最大船型 Max ship dimension			巴拿马型 Panama type
体积作业能力 Capacity (M3/H)		额定Rated	1600t/h
		峰值Peak	2000t/h
重量作业能力 Capacity (t/h)	谷物	额定Rated	960m ³
	Corn	峰值Peak	1200m ³
	煤	额定Rated	1450m ³
	Coal	峰值Peak	1800m ³

移动式散货连续装船机 Moveable Bulk Cargo Ship Loader



产能 Rated capacity	300t/h-4500t/h
适用船型 Ship type	1000DWT-50000DWT
主要结构部件 Main part including:	
大车行走 Gantry travelling	
门架 Portal frame	
塔架 Tower	
俯仰机构 Luffing mechanism	
臂架 Ib system	
伸缩臂 Telescopic boom	
悬臂皮带机 Belt conveyor	
溜筒 Drum	
尾车 Trail truck	



直线摇摆式装船机 Swing type Ship loader



生产率Capacity	1000t/h
适应船型Ship type	1000t~30000t(含自航船)
适应物料Material type	煤碳Coal 0.85t/ m3
轨道中心至后支承距离Span	25m
轮压Wheel load	≤25t
摆动角度Pendulum angle	42°
运行行程Travel distance	±20.5m/min
运行速度Travel speed	10m/min
伸缩行程Stretch distance	18m
伸缩速度Stretch speed	7m/min
俯仰角度Pitching angle	-5° - +10°
俯仰速度Pitching speed	0.2rad/min
伸缩行程Stretch distance	18m
伸缩速度Stretch speed	6m/min
供电电源Power supply	AC380V,50Hz
操作方式Operate system	中控监视Center Monitor 机上操作plane operate
整机PLC控制 PLC	手动、单动 Manual, single action

- 高效
High efficient
- 节能
Energy conservation
- 环保
Environmental protection
- 结构形式可靠，部件受力合理
Reliable structure and mechanism
- 整机稳定性好，检修维护方便
Easy maintenance

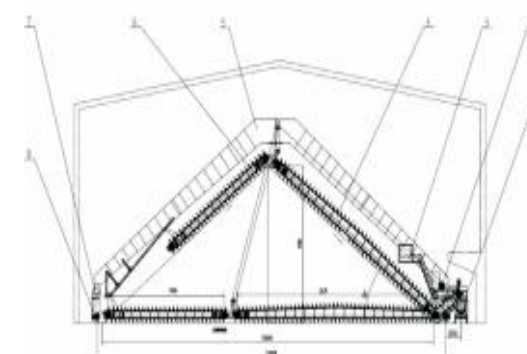
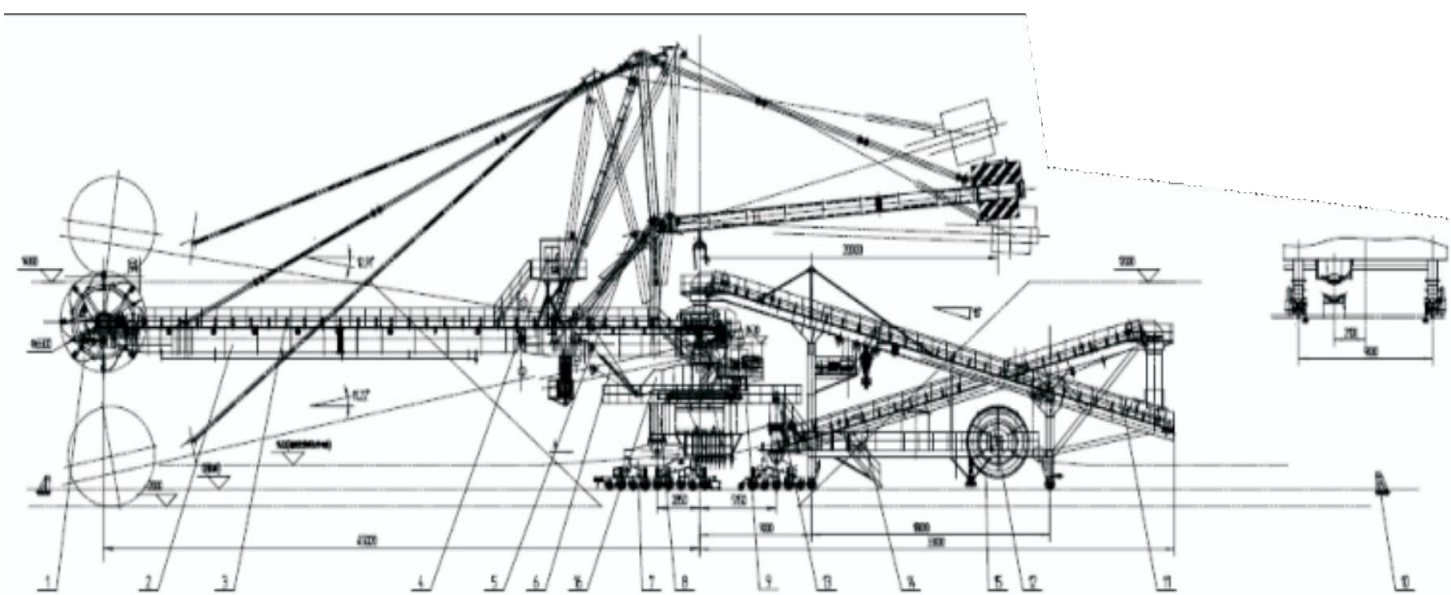
堆料机,取料机,堆取料机

Stacker;Reclaimer;Stacker And Reclaimer

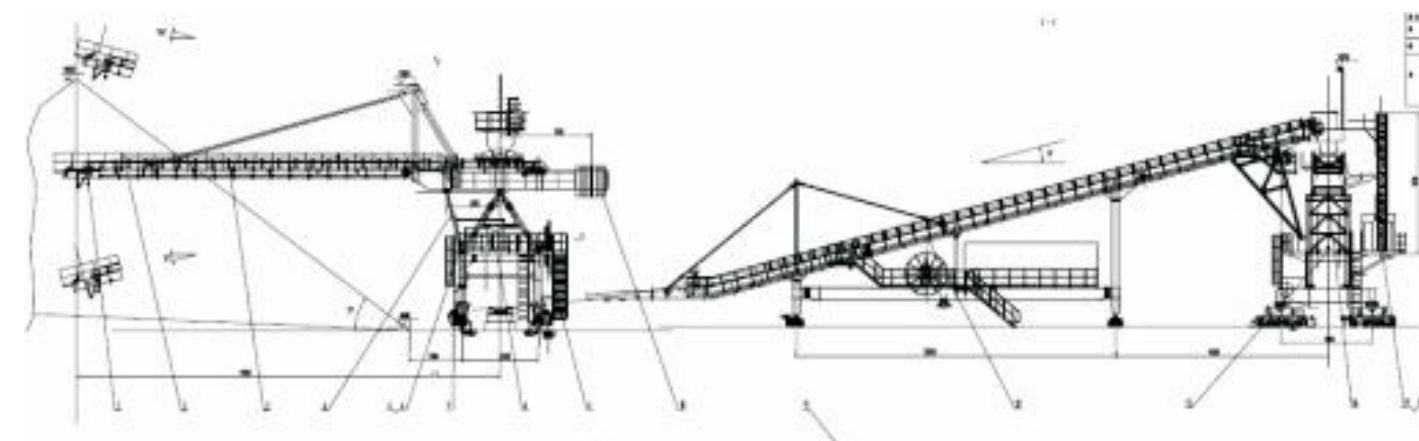
我司可根据各类工厂、码头、铁路等工矿企业，定制多规格、类别的堆料机，取料机，堆取料机。我司有着丰富的该型设备设计制造和安装经验，产品规格多样，设计先进、配置合理、服务专业、运行安全、结构可靠。

Our company can design and fabricate all kinds of Stacker;Reclaimer;Stacker and Reclaimer for plant, jetty and railway station for handling materials. Our company has rich experience in design,manufacturing and installation of this crane,our product's design is advance,configuration level is high,service is professional,structure is rational,operation is securit, easy and comfortable.

斗轮堆取料机
Bucket-wheel Stacker and Reclaimer
产能Capacity: 1800t/h



- 结构形式可靠，部件受力合理
Reliable structure and mechanism
- 整机稳定性好，检修维护方便
Easy maintenance
- 适应多种料场，生产效率高
Fits all kinds of stockyard good production capacity
- 机型成熟，操作简单舒适。
Mature type, easy operation
- 可处理各类散装物料
Fits all kinds of bulks



其它产品 Other Products



大型海工钢结构件制作
Large steel structure fabrication

水电站门式启闭机
Hydropower station sluice gate gantry crane



皮带机
Belt conveyer

桁架、箱型装卸桥
Truss/box-type loader&unloader



链斗连续卸船机
Chain-bucket ship unloader

主要生产设备 Main Equipment



大型镗床 Boring machine



龙门铣 Gantry type milling machine



数控平面钻床 NC drill machine



抛丸喷漆机 Shot blasting machine



数控切割机 NC cutting machine



铣边机 Edge milling machine



生产车间 Work-Shop



主要业绩表 Major Sales Performance

序号No.	使用单位Client	主要规格Main Specification	数量Quantity	DeliveryYear
船厂门式起重机 Goliath Gantry crane for shipyard				
1	韩进重工业HHIC Phil	900t×216M, 单梁 Single girder	2	2009
2	韩进重工业 HHIC Phil	900t×177M, 单梁 Single girder	2	2007
3	江苏靖江造船厂Jiangsu Jingjiang Shipyard	600t×126m, 双梁 Double girder	1	2003
4	启东丰顺船舶重工有限公司Qidong Fenshun Shipyard	600t×101.5m, 双梁 Double girder	1	2012
5	中基船业 Zhongji Shipyard	500t×146m, 双梁 Double girder	2	2010
6	中港第二航务工程局 China port the second NM engineering bureau	500t×30m, 双梁 Double girder	1	2005
7	启东丰顺船舶重工有限公司Qidong Fenshun Shipyard	450t×42m, 双梁 Double girder	2	2011
8	宏华海洋油气装备有限公司Honghua group limited	400t×100m, 双梁 Double girder	1	2012
9	中国神华煤制油有限公司China Shenhua Group	350/50t×21m, 双梁 Double girder	1	2006
10	中国神华煤制油有限公司Shenhua Group	350/25t×21m, 双梁 Double girder	1	2006
11	三进Korea Sanjin Shipyard	300t×78m 双梁 Double girder	2	2010
12	扬子江船厂有限公司Yangtze Shipyard	300t×72m, 双梁 Double girder	1	2005
13	福建省冠海造船工业有限公司Fujian Guanhai Shipyard	300t×70m, 双梁 Double girder	1	2008
14	中交第二航务工程局SHEC	250/10t×33.5m, 双梁 Double girder	2	2007
15	大连中远船务工程有限公司COSCO Dalian	200t×130m双梁 Double girder	1	2008
16	启东丰顺船舶重工有限公司Qidong Fenshun Shipyard	200t×101.5m, 双梁 Double girder	1	2011
17	南京东泽船舶制造有限公司Nanjing Dongze Shipyard	150t×80m, 双梁 Double girder	2	2009
18	浙江造船厂Zhejiang Shipyard	(100t+50t)×45m, 双梁 Double girder	1	2006
19	福建省冠海造船工业有限公司Fujian shipyard	100t×70m, 双梁 Double girder	1	2008
20	启东丰顺船舶重工有限公司Qidong Fenshun Shipyard	100t×43m, 双梁 Double girder	1	2012
船厂用门座式起重机Shipyard Jib Crane				
21	中基船业 Zhongji Shipyard	45t70m	4	2010
22	上海获港船厂 Shanghai Digang Shipyard	40t55m	2	2003
23	上海立丰船厂 Shanghai Lifeng Shipyard	40t50m	1	2005
24	江阴澄西船厂Jiangyin chengxi shipyard	40t25m	1	2004
25	中基船业 Zhongji Shipyard	32t65m	2	2011
26	启东丰顺船舶重工有限公司Qidong Fenshun Shipyard	32t58m	4	2010
27	南京东泽船舶制造有限公司Nanjing Dongze Shipyard	32t50m	2	2008
28	浙江恒宇船舶Zhejiang henyu Shipyard	32t55m	2	2011
29	吉宝船厂 Keppel Shipard(新加坡 Singapore)	30t105m	3	2012
30	启东丰顺船舶重工有限公司Qidong Fenshun Shipyard	16t33m	1	2012
港口门座式起重机 Portal Luffing Crane				
31	连云港港务局Lianyungang Harbor Bureau	4025四连杆门座式起重机Double Linkage Jib Crane	2	2005
32	曹妃甸码头Caofeidian Port	4533四连杆门座式起重机Double Linkage Jib Crane	4	2006
33	上海海运局关港码头Shanghai Guanggang Port	4030四连杆门座式起重机Double Linkage Jib Crane	1	2006
34	上海海运局Shanghai Harbor Bureau	2533四连杆门座式起重机Double Linkage Jib Crane	2	2007
35	重庆涪陵港务局Chongqing fuling port authority	2530四连杆门座式起重机Double Linkage Jib Crane	4	2013
36	福建福宁港务局Fujian funing port authority	2530四连杆门座式起重机Double Linkage Jib Crane	1	2013
37	P.T. Pupuk Kalimantan Timur(印度尼西亚 Indonesia)	4022四连杆门座式起重机Double Linkage Jib Crane	2	2014
港口集装箱起重机 Portal Container Crane				
38	肯尼亚Kenya Port Authority	50t×45m集装箱岸桥STS RMQC	2	2008
39	印度Vishakhapattinam, India	50t-52m集装箱岸桥STS RMQC	2	2010
40	也门Hodeidah Port, Keny	45t-40m 集装箱岸桥STS RMQC	4	2009
41	广州云浮 Yunfu Port	41t×26m集装箱岸桥STS RMQC	2	2009
42	四川长通 Sichuan Changtong	41t×25m集装箱岸桥STS RMQC	2	2011
43	东华集装箱公司Donghua	40t×47m集装箱门吊RMG	2	2008

主要业绩表 Major Sales Performance

44	武汉新港建设公司 Wuhan new port construction group company	40t×40m集装箱门吊RMG	4	2014
45	上海铁路局Shanghai railway freight	440t×40m集装箱门吊RMG	2	2014
46	上海铁路局Shanghai railway freight	40t×35m集装箱门吊RMG	2	2014
47	上海铁路局Shanghai railway freight	40t×30m集装箱门吊RMG	4	2014
48	上海铁路局Shanghai railway freight	40t×26m集装箱门吊RMG	2	2014
49	武汉铁路局Wuhan railway freight	40t×30m集装箱门吊RMG	2	2014
50	金温铁路开发Jinwen Railway	36t×30m 集装箱门吊 RMG	2	2008
51	中交二航局CSNEC	35t×35m集装箱门吊RMG	2	2010
52	肯尼亚Kenya Port Authority	41t×30m集装箱轮胎吊RTG	4	2008
53	科威特Kuwait KWP	40t×30m集装箱轮胎吊RTG	4	2010
港口装卸船机 Portal Ship loader & unloader				
54	池州港务管理局Chizhou Harbour Bureau	1600t/h 卸船机Ship unloader	1	2005
55	巴基斯坦钢铁Pakistan Steel	1500t/h Grab ship unloader	1	2006
56	南京下关电厂 Nanjing Xiaguan Power Plant	1000t/h抓斗卸船机Grab ship unloader	1	2007
57	镇江港务局Zhenjiang Harbor Bureau	500t-3500t/h装船机Ship loader	1	2008
58	印尼Indonesia LAMPUNG Power plant	600t/h卸船机Ship unloader	1	2010
59	南通港务局Nantong Harbor Bureau	800t/h卸船机Ship unloader	1	2008
60	海门电力有限公司HPP	600t/h 卸船机Ship unloader	1	2007
61	四川艾西亚电力有限公司 Sichuan Asia Power	600t/h 卸船机Ship unloader	1	2012
62	广东中山电厂Guangdong Zhongshan Power Plant	500t/h 卸船机Ship unloader	1	2007
桥吊Overhead Crane				
63	广西长洲水电开发有限公司 Guangxi changzhou hydropower station	200/50t×31.5m	2	2007
64	云南漫湾田坝水电站Yunnan manwan tianba hydropower staion	200/32t×33.5m	2	2008
65	江苏鹏飞集团Penfei	200/50t×28.5m	1	2009
66	四川犍为电力集团公司Sichuan jianwei power	200/50t×35m	2	2008
67	四川金洋电力发展有限公司Sichuan jinyang power	150/50t×28.5m	1	2010
68	南京东泽船舶制造有限公司Nanjing Dongze Shipyard	(100t+50t)×31.5m	3	2009
69	浙江临安青山殿水电站Zhejiang linan qinshandian hydropower	125/50t×28.5m	2	2009
70	上海沪东造船厂 Shanghai Hudong Shipyard	125/32t×22.5m	2	2007
71	协鑫(集团)控股有限公司Xiexin group	100/20t×31.5m	6	2007
72	浙江丽水玉溪水电站Zhejiang lishui yuxi hydropower	100/20t×31.5m	2	2010
73	江苏鹏飞集团Penfei	100t/20t×28.5m	4	2010
74	上海电气电站设备公司	100t/20t×31.5m	2	2013
75	江苏鹏飞集团Penfei	75/20t×28.5m	2	2010
76	上海沪东造船厂Shanghai Hudong Shipyard	75/20t×24.1m	1	2006
77	印尼楠榜发电厂 PLTU Langpung(Indonesia)	75t×27m	1	2010
78	无锡红旗除尘设备有限公司Wuxi Hongqi environment	50/10t×22.5m	1	2011
79	协鑫(集团)控股有限公司Xiexin group	50/20t×31.5m	5	2008
其它Others				
80	山西水泥厂SX cement	钢结构Steel Structure 42m×2	50000m ²	2007
81	越南水电站Vietnam hydraulic power station	启闭机Sluice-gate gantry crane for hydraulic power station	1	2006

本表为主要业绩，其它不一一叙述
This list is typical sales performance only, not including all the sales performance.